

Monochrome Production Printer

RICOH
imagine. change.

RICOH Pro 8400S

✓ Printer ✓ Copier ✓ Scanner



RICOH Pro
8400S

96
ppm Black &
White

Streamlining production in schools and offices.

Boost engagement and efficiency with the RICOH Pro 8400S. This multifunctional titan seamlessly processes digital and paper-based information, eliminating queues with its rapid delivery of black and white output. Its smart operation panel and single-pass scanner make it incredibly easy to use. Space-saving finishing systems, such as the multipurpose booklet finisher, increase flexibility and convenience.

Elevate your print environment with the Pro 8400S.



The RICOH Pro 8400S.

User friendly. Environmentally friendly, too.

In every walk of life, sustainability is important.
Your printer, that everyday workhorse, is no exception.
Naturally, you need one that's productive and easy to operate.
But you also need it to be environmentally responsible.
The RICOH Pro 8400S is designed for sustainability.
It treats users and the environment with equal care.
Delivering powerful support for your operation,
it is also versatile and robust. Everything you need.

Ricoh: driving sustainability for the future.



A powerful performer.

Streamline document processes and raise productivity.



Immaculate quality at express speed.

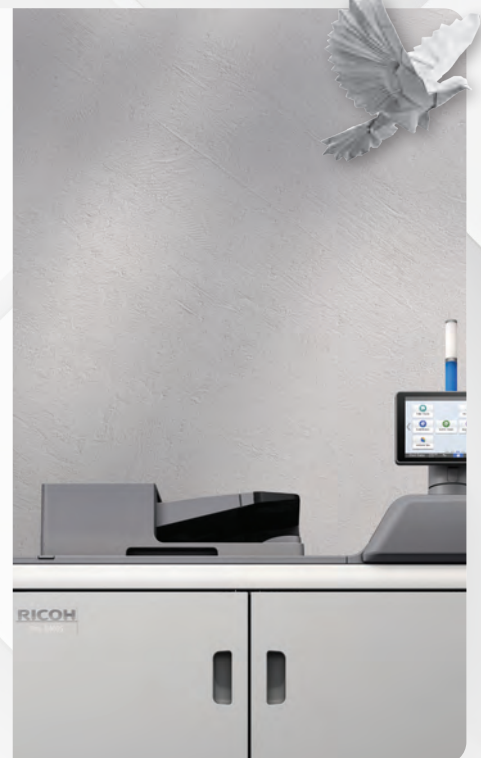
You can depend on the RICOH Pro 8400S. Highly productive, it delivers crisp black and white output at express speed. Our VCSEL imaging technology ensures that every dot is perfect. Its touchscreen panel, single-pass scanner, and convenient shift-sort tray make operation simple. For more demanding applications, it can be tailored with finishing systems that streamline production without compromising space.

- Compact yet highly productive monochrome MFP.
- Smart operation panel makes the Pro 8400S simple to use.
- Dynamic tray and toner switching reduce interruptions.
- 96 page per minute productivity cuts through print queues.
- With 2400 x 4800 dpi VCSEL resolution, the quality is exceptional.

Easily scan and distribute information.

The Pro 8400S is equipped, as standard, with a productive single-pass document feeder. Save time with simultaneous dual-sided scanning at speeds of up to 280 images per minute. Feed up to 220 double-sided originals at a time. Simplify job build by batch scanning larger document sets. Automate capture of small documents, such as business cards. Employ versatile scan-to features for efficient document distribution.

- Scan, record, and distribute business critical information.
- Dual-sided scanning at speeds of up to 280 images per minute.
- 220 sheet single pass document feeder enhances productivity.
- Simplify job build by batch scanning larger document sets.
- Effortlessly handle small documents, including business cards.





Boost productivity and save space.

Boosting productivity and user convenience, the Pro 8400S can be configured with a slimline Large Capacity Tray (LCT) and a compact multipurpose finisher. The A4 LCT expands the paper capacity to 8,250 sheets from six paper stations, while the multipurpose finisher supports stapling, hole punching, and booklet making. Ideal for space-constrained settings, the sleek LCT and finisher extend the system by less than a metre.*¹

- Expand functionality with customised finishing options.
- Slimline A4 LCT expands paper capacity to 8,250 sheets.
- Compact multipurpose finisher supports booklet making.
- Boost productivity and convenience without imposing on space.
- The LCT and finisher extend the system by less than a metre.

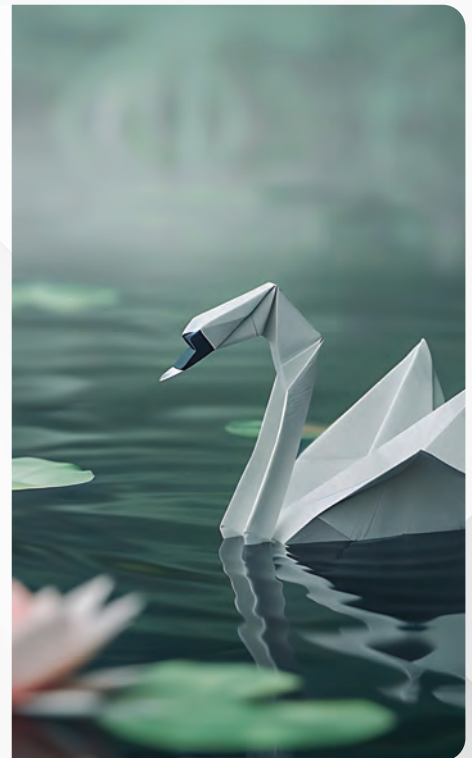
¹ 797 mm increase in system length compared with mainframe and regular shift sort tray.

Conserve energy and reduce carbon emissions.

Ricoh is committed to providing products and services that improve business efficiency and productivity while significantly reducing carbon emissions. The Ricoh Pro 8400S is no exception. Helping you cut energy consumption, the digital press boasts class leading energy efficiency. Diverting waste from landfill, it also comprises 25% post-consumer recycled plastic and 33% electric furnace recycled steel.

- Significantly reduce energy consumption.
- Pro 8400S offers class leading energy efficiency.*¹
- Help preserve natural resources and divert waste from landfill.
- Presses comprise 25% recycled plastic and 33% recycled steel.
- Plastic packaging also reduced by 50%.

¹ Typical Energy Consumption (TEC) calculated in accordance with Energy Star V3.0.



RICOH Pro 8400S

SYSTEM SPECIFICATIONS

GENERAL

Functionality:	Print, copy and scan
Print Process:	1-drum dry electrostatic transfer system with internal transfer belt
Imaging Technology:	40-beam VCSEL (Vertical Cavity Surface Emitting Laser)
Fusing Method:	Oil-less belt
Control Panel:	10.1" Smart Operation Panel
Print Speed:	96 ppm
Resolution:	VCSEL 2,400 x 4,800 dpi
Warm Up Time:	Less than 300 seconds
Dimensions (WxDxH):	1,141 x 900 x 1,397 mm
Weight:	428kg
Power Source:	220-240 V, 20 A (dedicated), 50/60 Hz
Typical Energy Consumption (TEC):	11.9 kWh/wk
Maximum Power Consumption:	2,860 W
Life:	60,000,000 A4 pages or 5 years

MEDIA HANDLING

Standard Paper Trays:	Tray 1: 2 x 1,000 sheets, 52 - 256 gsm Tray 2: 550 sheets, 52 - 256 gsm Tray 3: 550 sheets, 52 - 256 gsm
A4 LCIT (option)	Tray 4: 1,100 sheets, 52 - 216 gsm Tray 5: 1,100 sheets, 52 - 216 gsm Tray 6: 2,800 sheets, 52 - 163 gsm
A3/SRA3 LCIT (option)	Tray 4: 1,100 sheets, 52 - 256 gsm Tray 5: 2,200 sheets, 52 - 300 gsm Tray 6: 1,100 sheets, 52 - 256 gsm
Vacuum Feed LCIT (option)	Tray 4: 2,200 sheets, 52 - 300 gsm Tray 5: 2,200 sheets, 52 - 300 gsm
Bypass Tray (option):	550 sheets, 52 - 220 gsm
Maximum Paper Size:	330.2 x 487.7mm (option dependent)
Maximum Paper Weight:	300 gsm (option dependent)

PRINTER

RICOH GW Controller (standard)

Configuration:	Embedded
System Version:	G3.0(23A)
CPU:	Intel® Apollo Lake E3940 1.6 GHz
Memory:	2 GB
Storage:	Standard: 640 GB HDD (320 GB HDD x 2 pcs)
Page Description Language:	Standard: PCL5e, PCL6, PostScript3 Emulation, PDF Direct Print Emulation, JPEG, TIFF; Option: Adobe PostScript3, Adobe PDF Direct Print, IPDS, XPS

Fiery EB-36 Controller (option)

Configuration:	External
System Version:	Fiery FS600 Pro Software
CPU:	Intel® Pentium® G7400E 3.7GHz
Memory:	8 GB (2 x 4 GB)
Storage:	240 GB SSD (for OS and Fiery software) 500 GB SATA HDD (storage)
Page Description Language:	PCL6, PostScript 3 Emulation

OTHER OPTIONS

Attention Light (AL3000), Media Identification Unit (Type S3), A4 LCIT (RT5160), A3/SRA3 LCIT (RT5170), Vacuum Feed LCIT (RT5150), Multi Bypass Tray (BY5020), Cover Interposer Tray (CI5040), Shift Sort Tray SH5000, Staple Finisher (SR5130), Booklet Finisher (SR5140), Staple Finisher (SR5110), Booklet Finisher (SR5120), Trimmer Unit (TR5050)

WORKFLOW SOLUTIONS

Ricoh ProcessDirector, Ricoh TotalFlow BatchBuilder, Ricoh Supervisor, InfoPrint Manager, EPS MarketDirect Storefront & Cross Media, Fiery Impose, Fiery Compose, Fiery JobMaster.