

Compact and Durability

to assist with daily tasks



ECOSYS PA4500cx Series
TASKalfa PA4500ci Series

Color Printer for A4 Format

Born to be extraordinary

KYOCERA Document Solutions is Extraordinary for

- Broad Range of Multifunction Devices and Printers
- Optimized Total Cost of Ownership (TCO)
- Reliable with Long Life Drum and Parts
- New and Advanced Technology

KYOCERA Document Solutions strives to be a company that contributes to the society and demonstrates a "Customer First" principle by providing customers with maximum value to increase their satisfaction. By adhering to the mission of producing document management devices that take balance between "Economy" and "Ecology", KYOCERA Document Solutions succeeds in developing document management devices with advanced technologies which help customers to optimize office productivity and efficiency at a low total cost of ownership and, at the same time, improving environmental performance.

Support your daily work with ECOSYS PA4500cx series and TASKalfa PA4500ci series

The A4 color printer is designed to boost productivity in small workspaces with its compact, sleek design. Built on the "Ecosys Concept" philosophy, these printers offer durable performance for various tasks.

- + High productivity with A5 horizontal size
- + Increased paper feed capacity to boost productivity
- + Newly developed fusing system to reduce paper wrinkles and curls, while delivering remarkable energy-saving capabilities.
- + Can be connected to two interfaces simultaneously*
- + Wireless LAN compatibility with 5GHz frequency band and Wi-Fi Direct**

*: Optional network board required for simultaneous connection

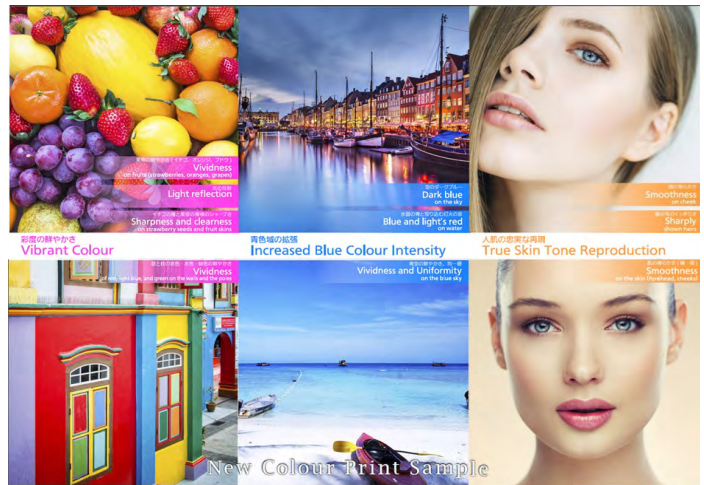
***: Option IB-37 required for Wi-Fi Direct support



Outstanding Image Quality

Improved image quality by adopting new toner

The ECOSYS PA4500cx and TASKalfa PA4500ci series adopt the capsule toner manufactured by new method. The image quality is improved compared to the current series in terms of “vibrant color”, “blue color intensity” and “true skin tone reproduction”.



Secure Your Business

Guards against malware and prohibit the execution of unknown programs, while mitigating security risks with document information leakage prevention.



IC card authentication

IC card authentication enables users to easily monitor the multifunction device's usage history and customize access levels for individual users.

**Card Authentication Kit(B) is required.*

Secure Device Data Protection

Information on the device is protected from unauthorized access by encrypting and overwriting any remaining data in its storage.

**Optional*

SIEM (Security Information and Event Management)

Logging security events and sending them to an external SIEM server via the Syslog Protocol allows for monitoring unauthorized operations, such as intrusion attempts, malware infections, and data leaks.

Allowlisting

The program management feature maintains a list of allowed programs, preventing any unauthorized programs from running. This ensures that even if malware enters the device, it cannot be executed, protecting it from any malware effects.



Compact design for any location

Maximize space

The primary unit boasts a sleek and compact design. This makes it perfect for fitting into tight spaces. Additionally, when paired with a specialized cabinet, it allows for organized storage of consumables like paper, thereby maximizing the efficiency of office space.

Multiple network connection

Connect to both wired and wireless LANs at the same time with a single unit. Utilize different networks including mission-critical and office networks and even add Wi-Fi printing capabilities for mobile convenience.

**Network card is required.*



Intuitive design

The operation panel features a tilt mechanism for angle adjustment and can be positioned beneath the counter. It offers improved visibility when installed in different locations like a table or a desk.





Eco-friendly

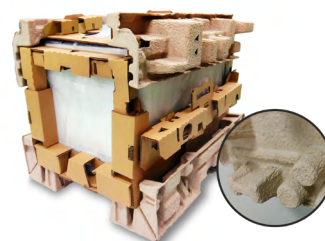
Long life design

Enhances resource conservation by using a long-life drum, reducing the need for frequent replacements and accumulation of discarded components.



Eco-friendly Packaging

Through the use of environmentally friendly materials that are easily recyclable, we have improved the cushioning and packaging durability of both the main unit and toner using innovative techniques.



Pulp mold Shape that is hard to fall and break

Energy-saving Mode

Controlling the fuser heater is a standard for Kyocera printers. Equipped with Energy-saving mode, Sleep mode, and auto off mode. By using each mode, both a comfortable output environment and energy-saving can be achieved.

Sleep time:		⚙	OK
(1 - 240)			
	1	minute(s)	
Power off time:		⚙	OK
hour	minute		
00	: 00		

Support Assistant



KYOCERA Mobile Print (Free application for smart devices).

Print effortlessly using mobile devices connected to the same network.

Specification of ECOSYS PA4500cx Series

Main Specifications				
Model		ECOSYS PA3500cx	ECOSYS PA4000cx	ECOSYS PA4500cx
Type		Desktop		
Printing method		Laser exposure dry electrostatic transcription method		
Print Speed (A4)		35 ppm	40 ppm	45 ppm
Panel Type		5-lines Panel		
CPU		ARM Cortex-A9 Dual core 1.2GHz + ARM Cortex-M3 100MHz		
Memory		Standard: 1,024 MB Max.: 1,024 MB	Standard: 1,024 MB Max.: 3,072 MB	
Dimension (WxDxH)		394mm × 533mm × 392.5mm	394mm × 533mm × 455mm	
Weight (including toner container)		33kg	34kg	
Paper Capacity	Standard	550 Sheets (Casette) + 100 Sheets (MPT)		
	Maximum	2,300 sheets (Main Unit + 550 sheets PF-5150 x3 + MPT)		2,850 sheets (Main Unit + 550 sheets PF-5150 x4 + MPT)
Paper Size	Casette	Max.: Folio (Legal) - Mini.: A6R (StatementR), 356mm x 216mm - 140mm x 105mm		
	Option	Max.: Folio (Legal) - Mini.: A5R		
	MPT	Max.: Folio (Legal) - Mini.: A6R (StatementR), 356mm x 216mm - 140mm x 70mm Banner Paper(1220 mm long and 216 mm wide, Simplex)		
Paper Weight	Casette	60 - 220 g/m2		
	Option	60 - 220 g/m2		
	MPT	60 - 220 g/m2		
Duplex Printing		A4(Legal) - A6R(StatementE), 60 - 163 g/m2		
Output Capacity		Max. 250 Sheets face-down	Max. 500 Sheets face-down	
Power Consumption (Standard configuration)	Copy/Print Mode	496.4W	533.3W	576.8W
	Stand-by Mode	11.8W		
	Energy Saver	0.4W		
Noise (ISO7779/ISO9296)	Operating	51dB(A)	53dB(A)	54dB(A)
	Stand-by	30dB(A)		
		Print Functions (Standard)		
PDL		PCL6 (PCL XL / PCL 5c), KPDL3, XPS / OpenXPS, PDF		
First Print Time (Mono/Color)		5.7 sec / 7.0 sec	5.4 sec / 6.6 sec	5.1 sec / 6.2 sec
Warm-up tme		23 sec or less	21 sec or less	20 sec or less
Print Resolution		1200x1200 dpi		
Encryption Communications		IPsec,HTTPS,LDAP over SSL,SNMPv3		
		Network Functions (Standard)		
Interface		USB 2.0 (Hi-Speed), USB Host x 2, Gigabit Ethernet (10BASE-T/100BASE-TX/ 1000BASE-T), optional Wireless LAN (IEEE802.11a/b/g/n/ac), eKUIO slot for optional devices, Slot for optional SD Card		
AirPrint		Yes		
Mopria		Yes		
		Consumables & Options		
Toner Yield (Start-up) (Mono/Color) *ECOSYS Model: ISO19798 original		3.5K / 2.5K	6K / 5K	8K / 6K
Toner Yield (Normal) (Mono/Color) *ECOSYS Model: ISO19798 original		TK-5375 K/Y/M/C 7K / 5K	TK-5385 K/Y/M/C 13K / 10K	TK-5395 K/Y/M/C 18K / 13K
Drum Life		200,000 pages		300,000 pages
Maintenance Kit		MK-5370 (200,000 pages) MK-5420 (300,000 image) Main unit cassette paper feed roller unit MK-5425 (300,000 image) PF cassette paper feed roller unit	MK-5380 (200,000 pages) MK-5420 (300,000 image) Main unit cassette paper feed roller unit MK-5425 (300,000 image) PF cassette paper feed roller unit	MK-5390 (300,000 pages) MK-5420 (300,000 image) Main unit cassette paper feed roller unit MK-5425 (300,000 image) PF cassette paper feed roller unit
Paper Feeder		PF-5150: 550 sheets		
Card Authentication		Card Authentication Kit(B)		
Gigabit Ethernet Board		IB-53		
Wireless LAN Interface		IB-37 (802.11 b/g/n/Wireless LAN/WiFi Direct)		
Storage Device		HD-17 SSD (64GB); HD-18 SSD (256GB)		
IC Card Reader Holder		Card Reader Holder 12		

Specification of TASKalfa PA4500ci Series

Main Specifications		
Model		TASKalfa PA4500ci
Type		Desktop
Printing method		Laser exposure dry electrostatic transcription method
Print Speed (A4)		45 ppm
Panel Type		4.3-inch full-color touch screen panel
CPU		ARM Cortex-A9 Dual core 1.2GHz + ARM Cortex-M3 100MHz
Memory		Standard: 1,024 MB Max.: 3,072 MB
Dimension (WxDxH)		394mm × 533mm × 455mm
Weight (including toner container)		34kg
Paper Capacity	Standard	550 Sheets (Cassette) + 100 Sheets (MPT)
	Maximum	2,850 sheets (Main Unit + 550 sheets PF-5150 x4 + MPT)
Paper Size	Cassette	Max.: Folio (Legal) - Mini.: A6R (StatementR), 356mm x 216mm - 140mm x 105mm
	Option	Max.: Folio (Legal) - Mini.: A5R
	MPT	Max.: Folio (Legal) - Mini.: A6R (StatementR), 356mm x 216mm - 140mm x 70mm Banner Paper(1220 mm long and 216 mm wide, Simplex)
Paper Weight	Cassette	60 - 220 g/m2
	Option	60 - 220 g/m2
	MPT	60 - 220 g/m2
Duplex Printing		A4(Legal) - A6R(StatementE), 60 - 163 g/m2
Output Capacity		Max. 500 Sheets face-down
Power Consumption (Standard configuration)	Copy/Print Mode	593.8W
	Stand-by Mode	12.8W
	Energy Saver	0.4W
Noise (ISO7779/ISO9296)	Operating	54dB(A)
	Stand-by	30dB(A)
		Print Functions (Standard)
PDL		PCL6 (PCL XL / PCL 5c), KPDL3, XPS / OpenXPS, PDF
First Print Time (Mono/Color)		5.1 sec / 6.2 sec
Warm-up tme		20 sec or less
Print Resolution		1200x1200 dpi
Encryption Communications		IPsec,HTTPS,LDAP over SSL,SNMPv3
		Network Functions (Standard)
Interface		USB 2.0 (Hi-Speed), USB Host x 2, Gigabit Ethernet (10BASE-T/100BASE-TX/ 1000BASE-T), optional Wireless LAN (IEEE802.11a/b/g/n/ac), eKUIO slot for optional devices, Slot for optional SD Card
AirPrint		Yes
Mopria		Yes
		Consumables & Options
Toner Yield (Start-up) (Mono/Color) *TASKalfa model: Color 5% original		8K / 6K
Toner Yield (Normal) (Mono/Color) *TASKalfa model: Color 5% original		TK-5420 K TK-5410 Y/M/C 20K / 13K
Drum Life		300,000 pages
Maintenance Kit		MK-5390 (300,000 pages) MK-5420 (300,000 image) Main unit cassette paper feed roller unit MK-5425 (300,000 image) PF cassette paper feed roller unit
Paper Feeder		PF-5150: 550 sheets
Card Authentication		Card Authentication Kit(B)
Gigabit Ethernet Board		IB-53
Wireless LAN Interface		IB-37 (802.11 b/g/n/Wireless LAN/WiFi Direct)
Storage Device		HD-17 SSD (64GB); HD-18 SSD (256GB)
IC Card Reader Holder		Card Reader Holder 12

Kyocera Document Solutions has championed innovative technology since 1934. We enable our customers to turn information into knowledge, excel at learning and surpass others. With professional expertise and a culture of empathetic partnership, we help organizations put knowledge to work to drive change.



KYOCERA Document Solutions Asia Limited

13/F, Mita Centre, 552-566 Castle Peak Road,
Tsuen Wan, N.T., Hong Kong
Tel : +852-2496-5678 / Fax: +852-2610-2063

Your Kyocera Business Partner

www.kyoceradocumentsolutions.asia